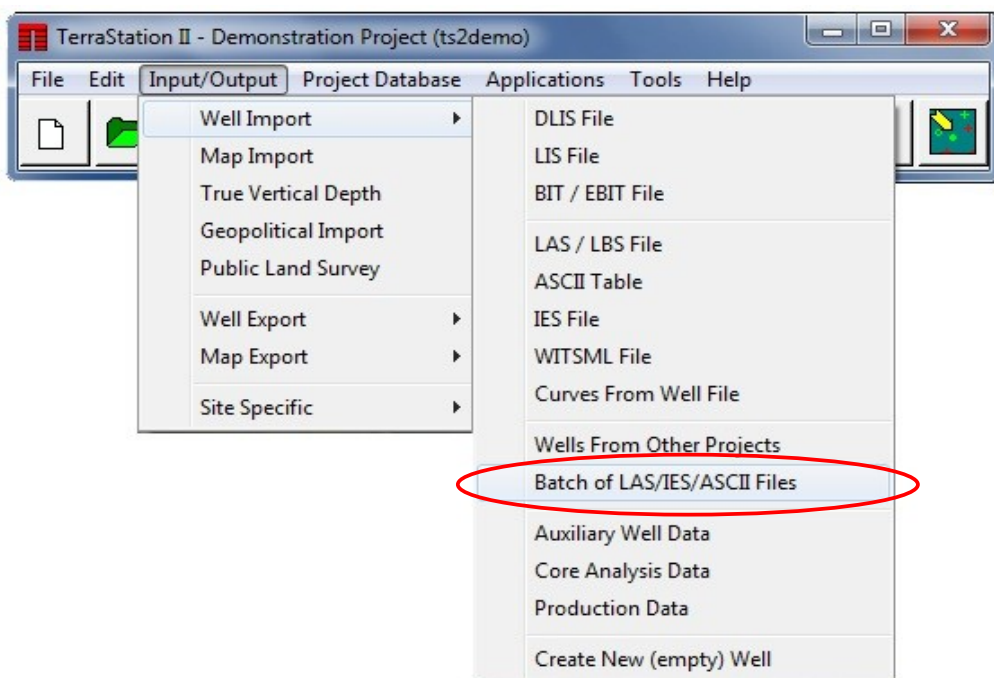
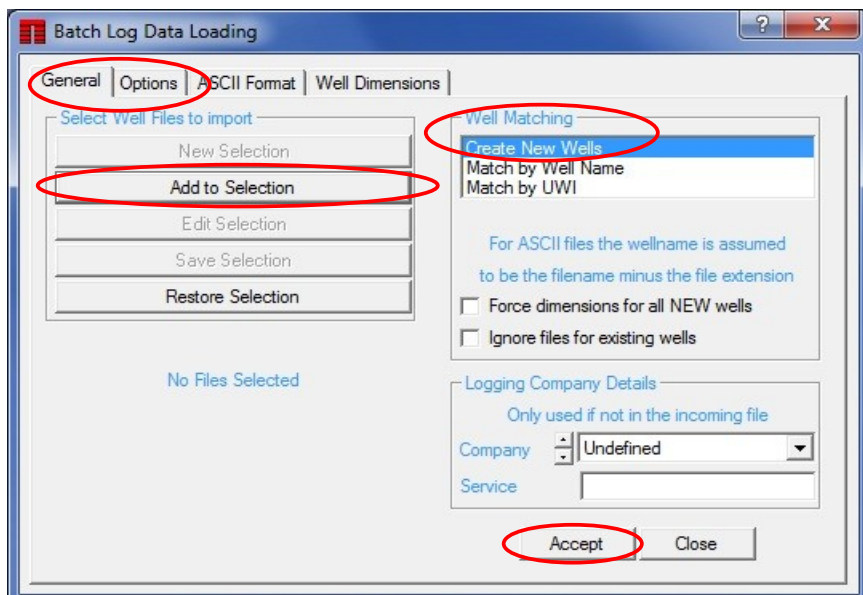




## Quick Guide To Batch Loading LAS Files



1. From the *Main Application Bar* Click **Input/Output**. Go to **Well Import, Batch of LAS/IES/ASCII Files** and Click. This will open the **Batch Log Data Loading** window.



2. On the *General tab* Click **Add to Selection**. Select the LAS files to be imported and Click **Open**. Under *Well Matching* select **Create New Wells**.
3. Click the *Options* tab and make any desired changes, then Click back onto the *General* tab.
4. Click **Accept** to load the data.

**Note: When loading in batch mode, ALL curves from every file will be loaded.**

**Thank you for using TerraStation.**