

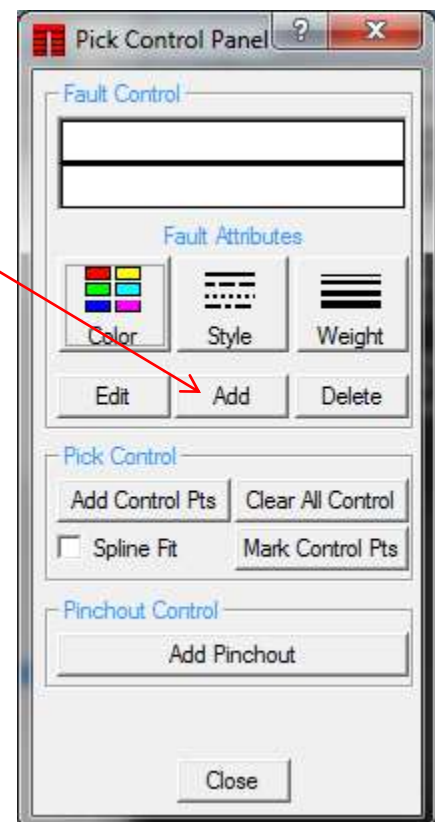
How do I add a fault with pick displacements to a cross section?

Copyright 2016 TERRASCIENCES

1. Click on **Applications** on the Main Applications Bar and select **Correlation** from the pull down menu.
2. If you have several maps in a project, Click the **Select Map** button and choose a map from the list. Click on **Accept** on the bottom of the control panel.
3. Create or restore a previously saved cross section using Zig-Zag, Projected, or Spider Display options.
4. On the power bar Click on the **Pick Control** button.



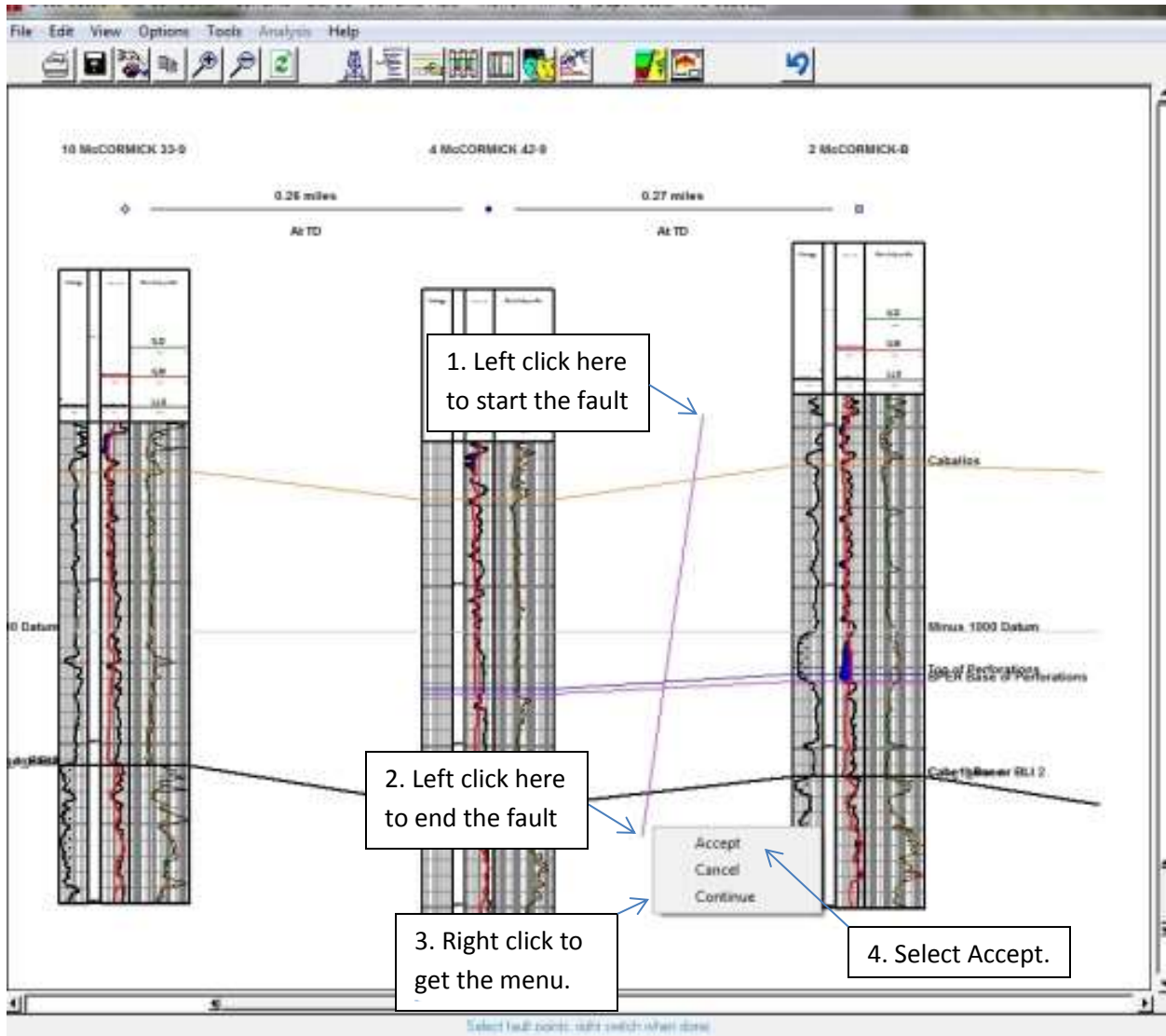
5. You will be presented with a Pick Control Panel window. Under Fault Attributes click the **Add** button.



6. Position the cursor on the screen to indicate the beginning of fault and Click the left mouse button, stretch the rubber band extending from this point across one or several pick lines.

7. Click the left mouse button again to indicate the end of fault.

8. Click the right mouse button and select **Accept** to finish the fault drawing



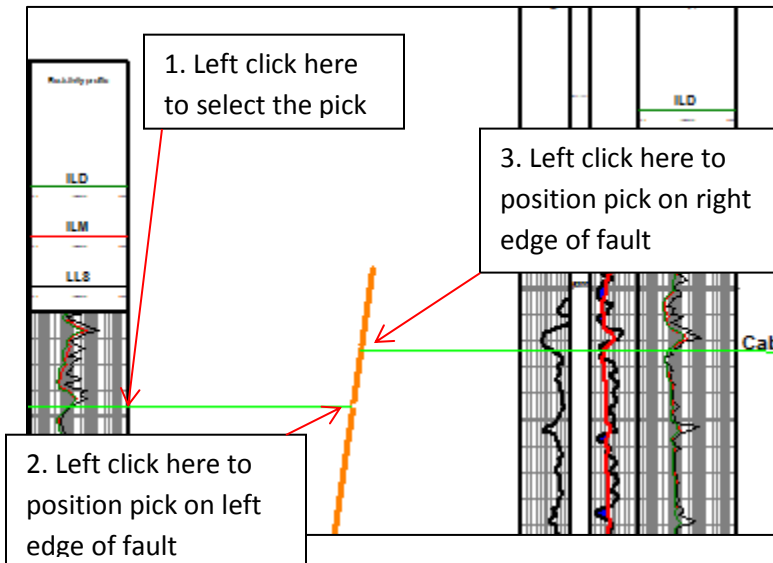
9. The Pick Control Panel window will change to **Fault Offset Entry** window.

Set the **Entry Mode** to **Graphical** for this example.

10. On the section, click on the pick line, that you would like to show a displacement. Click on the pick **AT A WELL LOCATION**, not near the fault. This select the pick to be changed.

11. Now, place the cursor on the fault line to indicate the pick displacement on the left side of the fault and click.

12. Move the cursor up or down along the fault line and click again. This step allows you to position the selected pick on the right side of the fault line.



13. If the fault line cuts more than one pick, repeat steps 10 through 12 for the other picks.

14. When finished click the right mouse button.

15. Press the **F2** key on your keyboard or Click on **Refresh** to redraw the display if it does not automatically redraw. Click on Close.

16. To save the cross section displayed on the screen, click on **File** in the title menu of the window and select **Save Setup** from the pull down menu. Type the name of the cross section in the dialog box of the keyboard entry and Click **Accept**.

You can restore the saved setup when required. To do that click on **File** in the title menu of the window and select **Restore Setup** from the pull down menu.