

## Loading Borehole Image Data from LAS files

LAS files are a common standard for wireline log data. It stands for Log ASCII Standard and is officially defined by the Canadian Well Log Society (CWLS). They, not Schlumberger, Halliburton, IHS, or anyone else, are the final arbiters of what is a valid LAS file.

Although wireline type images are generally not supplied in LAS format, often LWD type images are.

We shall load a simple example of this file type into the TerraStation.

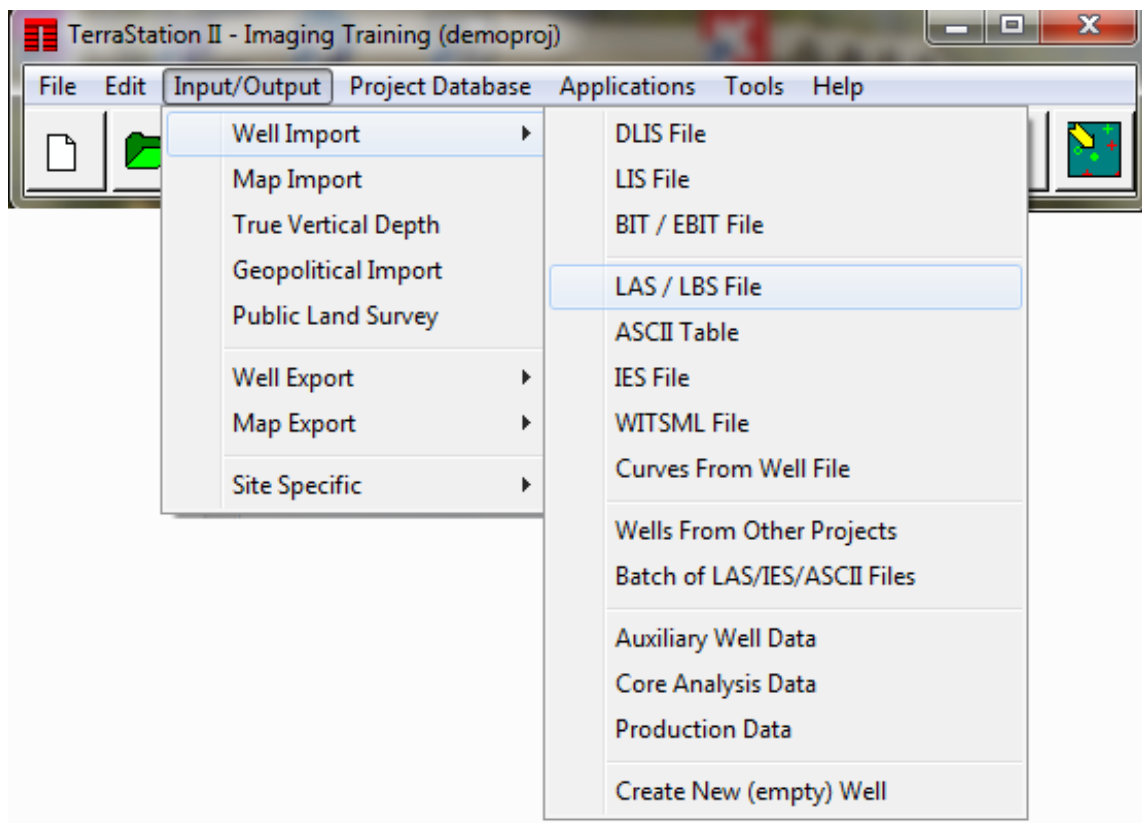
Press **Input/Output** on the main menu bar.

Select the **Well Import** option from the menu that appears.

Select the **LAS/LBS** option.

Note: LBS is an unofficial variation of the LAS format that has the same ASCII headers but binary curve data. It is not encountered too often.

This sequence is shown below.



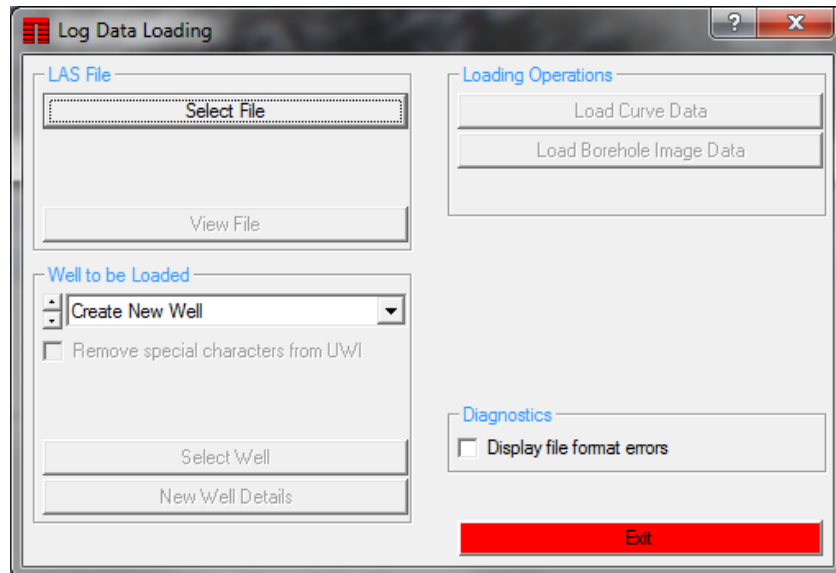
## Selecting the input file.

The following control window should now be visible...

Press the **Select File** button in the **LAS File** section of the window.

Choose the desired file from the file selection window.

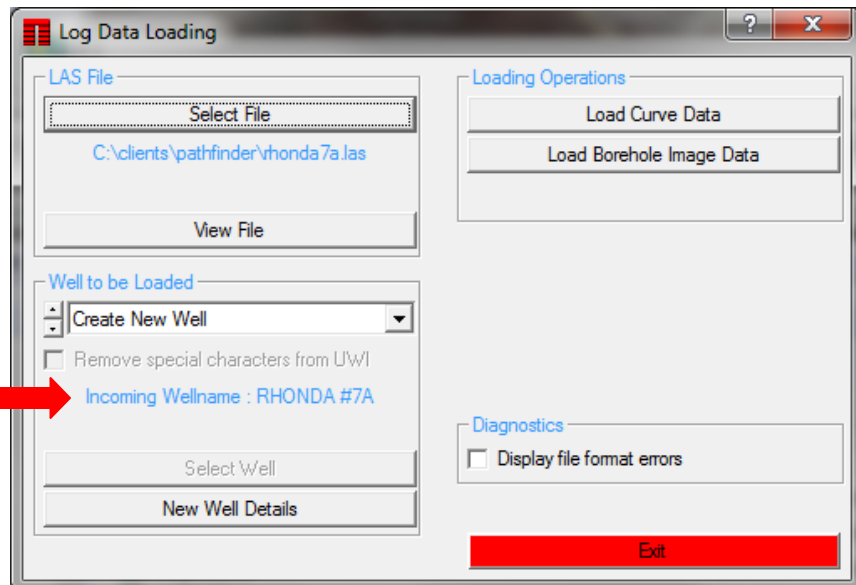
Leave the **Well to be loaded** setting as **Create New Well** in this case.



The panel should now look something like this...

Several buttons should now have activated.

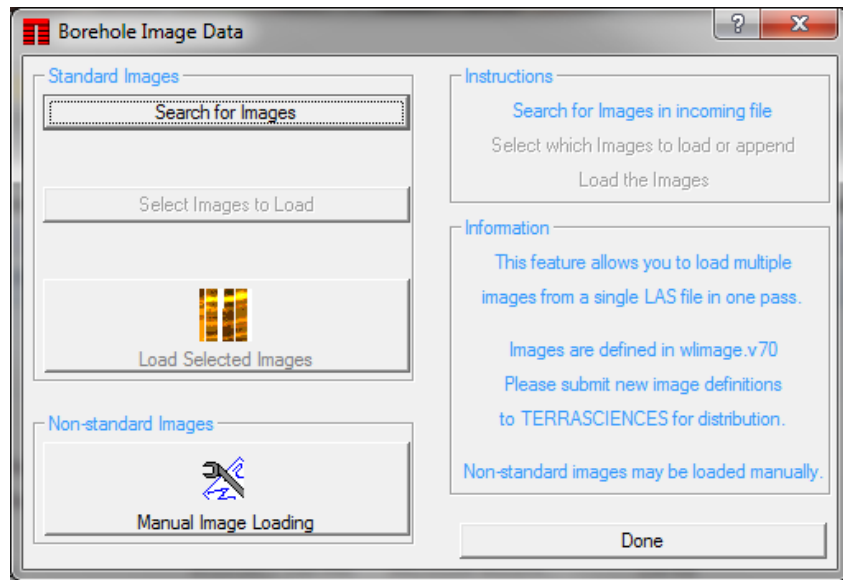
The well name from the LAS file should be displayed here.



Press the **Load Borehole Image Data** button.

The panel now appears like this....

Press the **Search for Images** button.

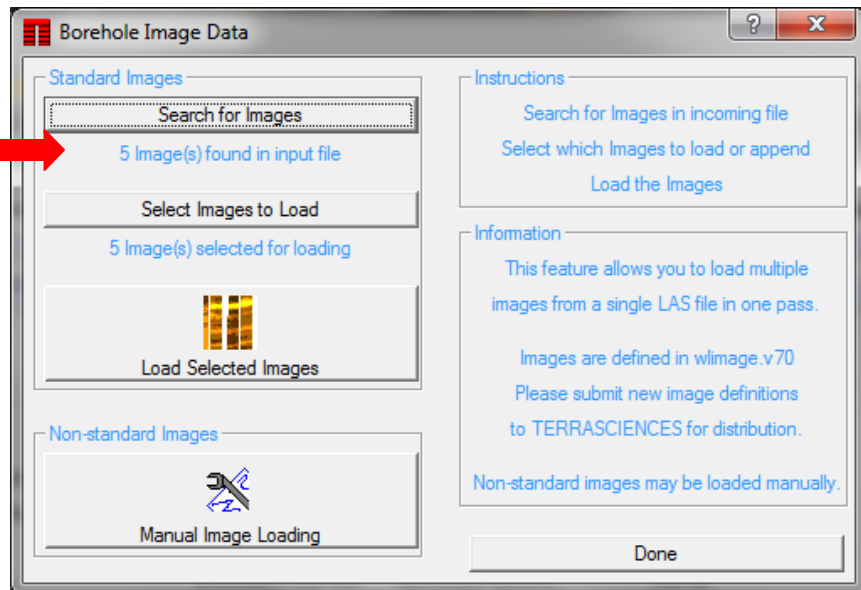


If any of the predefined mnemonics that the software knows are probably images are found then the panel changes to look like this...

Note the number of images found is displayed here.

By default the software loads all found images.

You can change this by clicking on the **Select Images to Load** button, and setting the **Load? Column** setting as you desire.



For example...

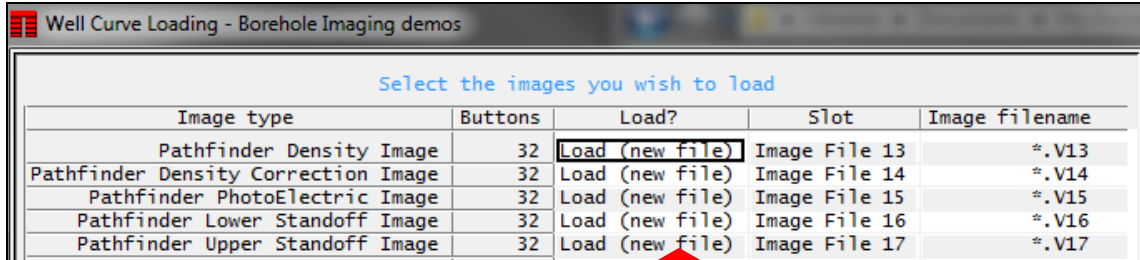


Image type	Buttons	Load?	Slot	Image filename
Pathfinder Density Image	32	Load (new file)	Image File 13	*.V13
Pathfinder Density Correction Image	32	Load (new file)	Image File 14	*.V14
Pathfinder PhotoElectric Image	32	Load (new file)	Image File 15	*.V15
Pathfinder Lower Standoff Image	32	Load (new file)	Image File 16	*.V16
Pathfinder Upper Standoff Image	32	Load (new file)	Image File 17	*.V17

Simply left click on an entry in the **Load?** column and select the setting you want from the small menu that appears. Options are:

- Do Not Load – the image will not be loaded.
- Load (new file) – the image data will be created as a new image.
- Load (append) – the image will be added to an existing image allowing multiple runs to be tied together in one image.

Here is an example after modifying the settings...

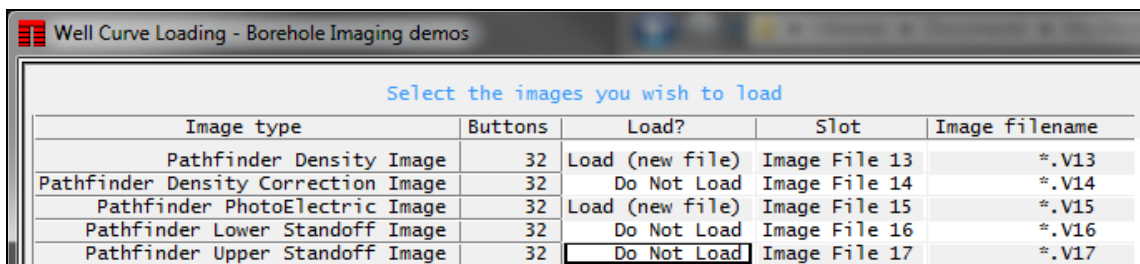
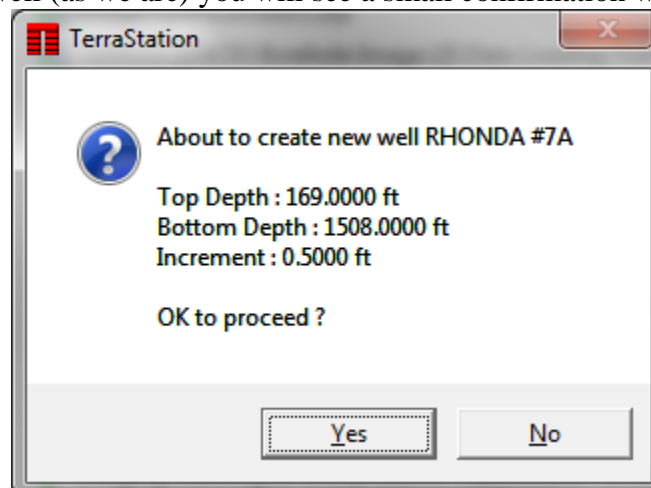


Image type	Buttons	Load?	Slot	Image filename
Pathfinder Density Image	32	Load (new file)	Image File 13	*.V13
Pathfinder Density Correction Image	32	Do Not Load	Image File 14	*.V14
Pathfinder PhotoElectric Image	32	Load (new file)	Image File 15	*.V15
Pathfinder Lower Standoff Image	32	Do Not Load	Image File 16	*.V16
Pathfinder Upper Standoff Image	32	Do Not Load	Image File 17	*.V17

When you are finished with this table press the **Done** button on the right hand side.

Now press the **Load Selected Images** button.

If creating a new well (as we are) you will see a small confirmation window.



Press **Yes** to proceed.

Each selected image is then loaded, and you get a small confirmation window after each one.