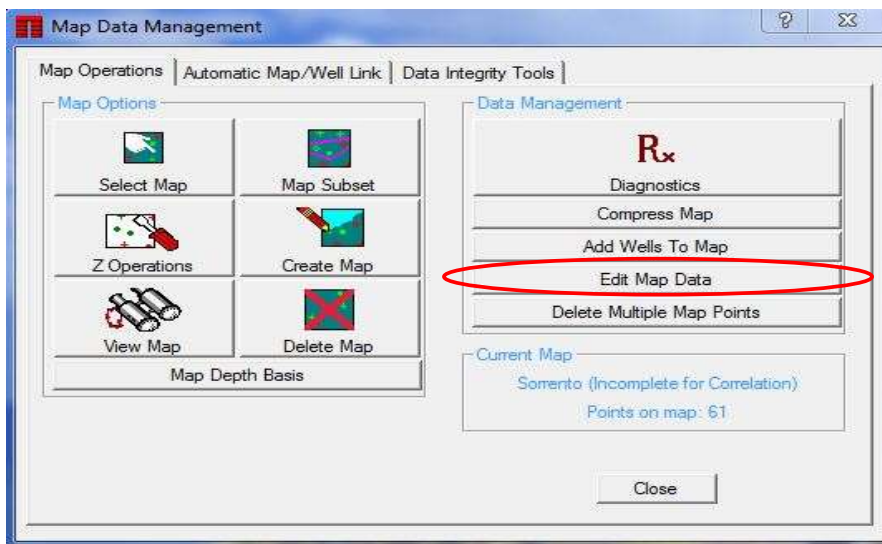




How Do I Link A Well File To An Existing Map Point?



1. On the *Main Application Bar* Click **Project Database** and then **Map Data Management**.



2. (Select your map first if necessary using the **Select Map** button.) On the *Map Data Management* window Click **Edit Map Data** button. Select any Z Variable/s and Click **Accept** and then Click **Ok**. The map data table appears....

Well Name	W#I	WF #	ID	Location: X Meters	At Surface Y Meters	Surface Elevati Feet
WILKERSON 1	Missing	0	9	680512.19	4305069.50	4500.00000000
1 BLEKEBERG	Missing	21	10	680533.12	4304268.36	4496.00000000
WILKERSON 2	Missing	0	12	680927.07	4304680.49	4482.00000000
HCCORMICK 1	Missing	0	13	682139.44	4303509.00	4484.00000000
WILKERSON 1-B	Missing	0	15	681760.19	4303902.49	4468.00000000
BLEKEBERG 1	Missing	1	16	679813.13	4303746.50	4478.00000000
CHAMPLIN-WILKERSON 1	Missing	0	17	680378.94	4300218.99	4494.00000000
1 MCCORMICK-A	Missing	10	18	687481.87	4301110.47	4470.00000000

3. Find the well you wish to link to. Locate the **WF#** column to the right. Any with a zero have nothing linked to them. Click the zero. Depending on which location you want to use the data from either Click **Link, Save Well File Header** button or **Link, Save Map Point Header** button. Select the well you want to use and Click the **Accept** button.

Thank you for using TerraStation