



Quick Guide To Updating Standalone TerraStation II Systems

Client Login

Client Portal is for current TERRASCIENCES' users only. It is only for accessing TerraStation software upgrades.

Username
[Text Input Field]

Password
[Text Input Field]

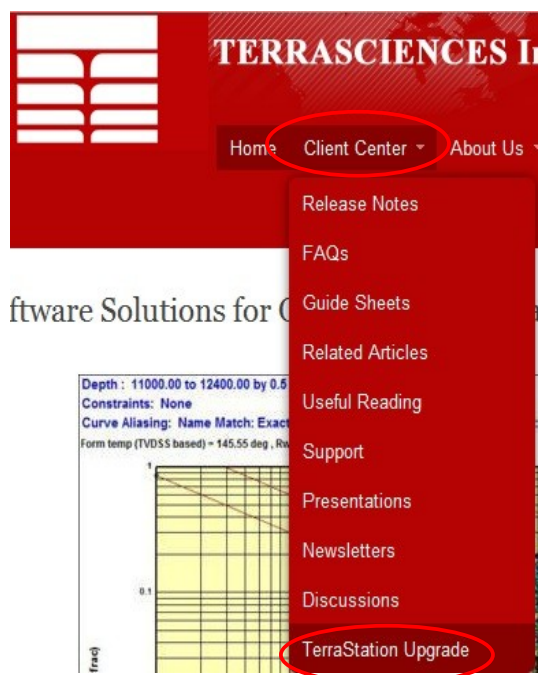
Remember me

[Forgot login?](#)

No account yet? [Register](#)

1. From your web browser go to www.terrasciences.com On the home page under *Client Login* type in your user name in the *User Name Dialog Box*, next type in your password in the *Password Dialog Box*. Either Press Enter on your keyboard or Click the **Login** button. You are now logged into the TerraSciences website.

2. From the TerraSciences home page move your mouse pointer onto **Client Center**, move down to **TerraStation Upgrade** and Click.



3. On the **TerraStation Upgrade** page simply Click on the latest version link. On the next **TerraStation Upgrade** page Click on the *Download Button*. Next Click *Save File* to save the *setp.exe* file. Select where to save the file on your computer and Click the *Save* button. Once the file is downloaded you can now log out of the TerraSciences website if you require by simply Clicking *Logout*.

TerraStation Upgrade

Documents

Order by : [Name](#) | [Date](#) | [Hits](#) [[Ascendant](#)]

TerraStation Version 7.216

TS V7.216 30 March, 2011

IMAGELog - some problems with the pressure model track have been resolved.

Sonic Waveform - an option has been added to splice a mute trace from a detail display.

Sonic Waveform - the "detailed" display now works correctly when initiated from a semblance mode track.

Sonic Waveform - the anisotropy calculation setup has been moved to a separate tab.

Sonic Waveform - the anisotropy calculation can now be used to create an image of anisotropy calculations at angles around the borehole.

Borehole Imaging - the "apparent dip" option can now be used in either a north or highside basis.

Data Loading - sonic waveform data can now be loaded from CSV formatted files.

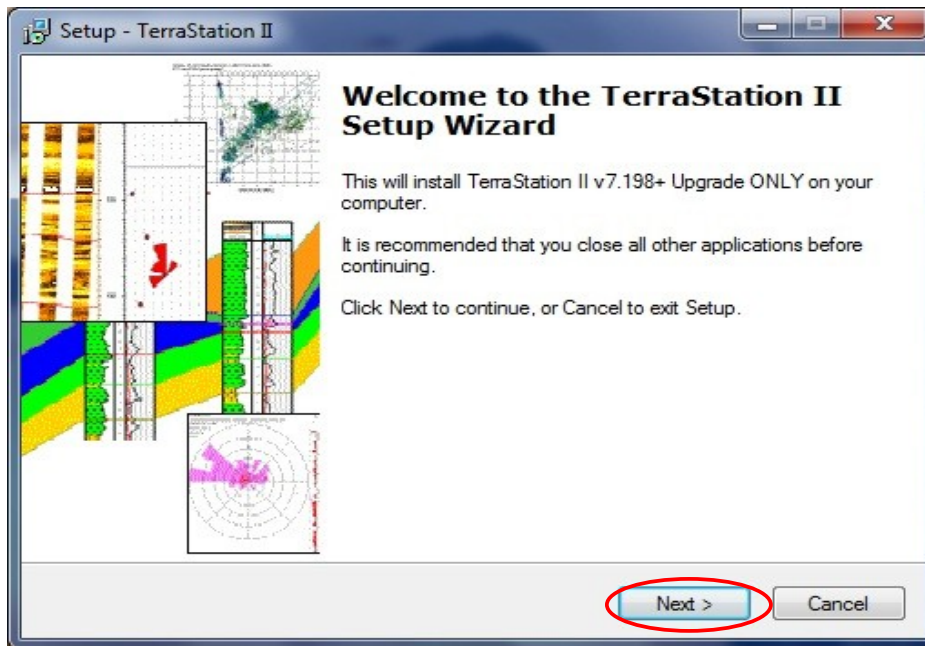
Petrophysics - a problem with the well key display in crossplotting (after changing the well collection) has been fixed.

new!

| | |
|----------------|------------|
| Date added: | 03/31/2011 |
| Date modified: | 03/31/2011 |
| Filesize: | 24.9 MB |
| Downloads: | 6 |

[Download](#)

[Details](#)



4. Locate the *setup.exe* file on your computer and Double Click it. On the **Setup – TerraStation II** window Click the **Next** button. Assuming you have done a standard installation Click the **Next** button. Then Click the **Install** button followed by the **Finish** button. You have now updated TerraStation.

Note: You must have an account on our website and your account must be marked as a client account by our web master in our Denver Office

Networked TerraStation systems should only be updated by the System Administrator