

### Dipmeter Processing and Analysis

TERRASCIENCES provides one of the most advanced, yet easy to use, packages for the processing and analysis of dipmeter data available today. You can load and process data from *any* of the service companies and choose from a wide variety of data formats to QC, process, analyze, and output your data. What's more, you can hand pick or automatically compute dips.

#### Supports all Dipmeter and Imaging Tools

You can process and load data from 4-arm and 6-arm tools (i.e., standard dipmeter *and* imaging tools, both sonic and resistivity) including data acquired by Schlumberger, Atlas, Halliburton, Computalog, and BPB. Data can be loaded from a variety of industry standard data sources, including LIS, DLIS, and LAS.

#### Data Preparation and Quality Control

Many types of graphical displays including cross plots, histograms, rose diagrams, and user-designed log templates are available to QC your raw data. Additionally, TerraStation offers several methods for you to edit and filter your raw data.

#### Processing

Make corrections for borehole geometry, speed variation, swing-arm correction, depth of investigation, and magnetic declination. When automatically calculating dips, you can vary and test your processing parameters such as correlation length, step length, and search angle.

#### Analysis Tools

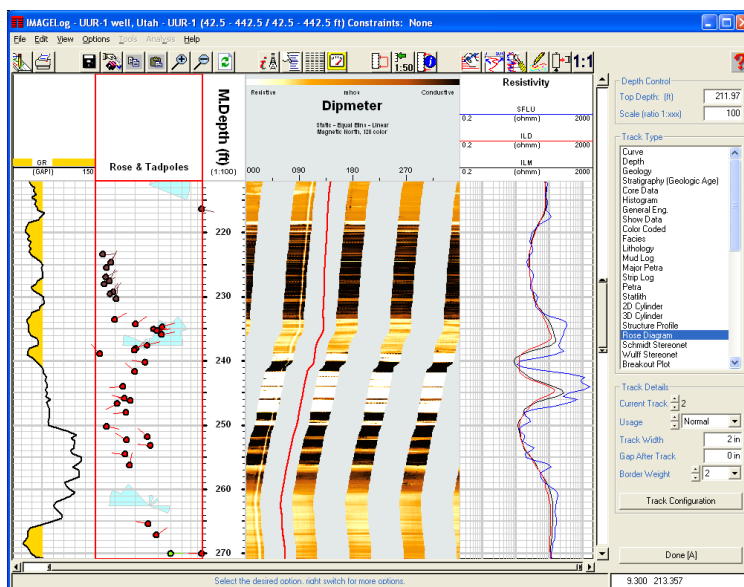
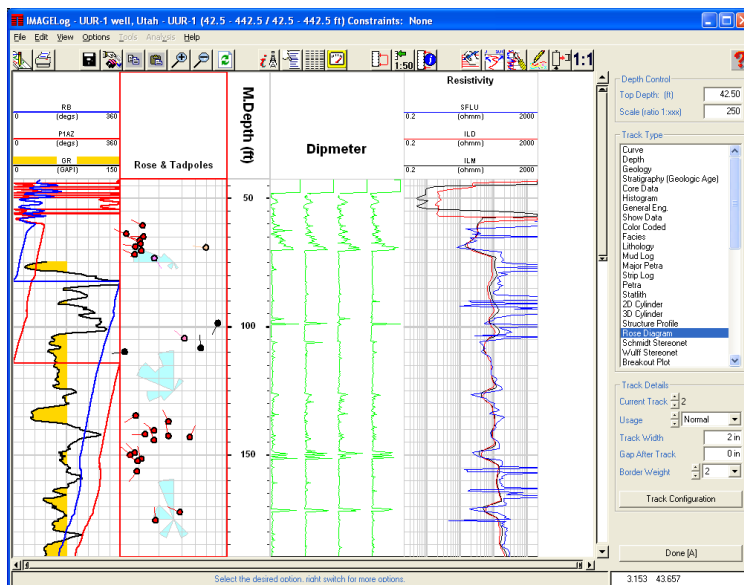
To better understand your dip data, you can remove structural dip (on an interval-by-interval basis, if necessary) and make SCAT Plots, Cumulative Dip plots and Dip Azimuth Vector Plots (sometimes known as Dip-walkaway Plots). A fully interactive stereonet based analysis module is also part of the system.

#### Types of Data Presentations

The dip curves can be displayed as curves or pseudo-images. From either, you can hand pick the dips. You can incorporate any other well data into the display, including wireline logs and core photographs.

#### Support and Training

TERRASCIENCES provides immediate telephone and email support by trained earth science professionals. A regularly updated web site, electronic newsletter, and training courses are also available. All product upgrades are included in the maintenance and support fee.



## Product Specification



- ✓ Load data from LIS, DLIS, and other formats.
- ✓ Handles data from 4, 6 and 8 arm tools.
- ✓ Borehole geometry corrections.
- ✓ Speed and swing-arm corrections.
- ✓ Magnetic declination and depth of investigation corrections.
- ✓ Automatic and manual pick generation.
- ✓ SCAT type plot output options available.
- ✓ Dip Walkaway, and cumulative dip plots.
- ✓ Structural dip removal options.
- ✓ User definable dip classification scheme.
- ✓ Interactive stereonet analysis.
- ✓ Statistical report including Fisher statistics.
- ✓ Display dipmeter curves as pseudo-images.
- ✓ Full vertical scale control.
- ✓ Interactive, user-definable color maps for pseudo-images.
- ✓ Dipmeter displays can be shown in cross section by utilizing other modules within the TerraStation.
- ✓ Graphics output to CGM, Postscript, PDF, EMF, BMP, JPEG, HPGL/2, and more.

