

TerraNotes

Current TerraStation II version: v7.495

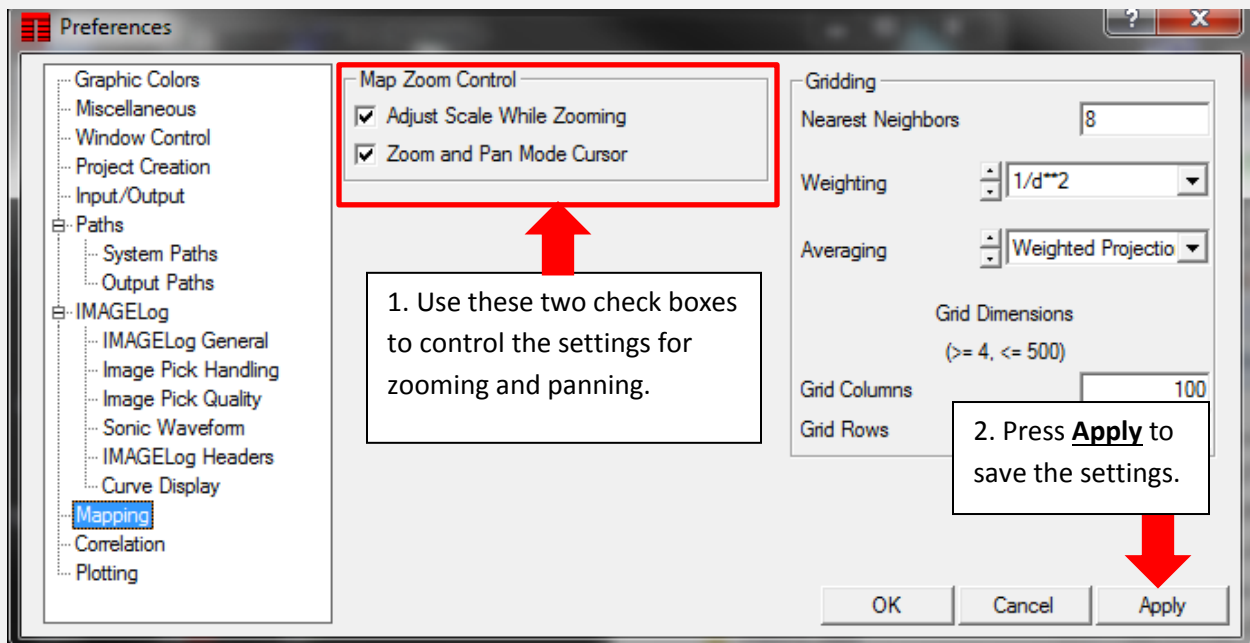
Featured In This Edition....

New Zoom and Pan Control for Maps.....	1
Netpay Zone Summary Addition	2
Faults on Structural and Stratigraphic Sections	5
Map Annotation Improvements and Additions	6
Export Auxiliary Data as LAS 2.0 format.....	8

New Zoom and Pan Control for Maps

We have added the ability to use the mouse wheel to zoom in and out on maps. We have also added the ability to grab and move the map, in a style similar to that found in Google Maps and other map based software.

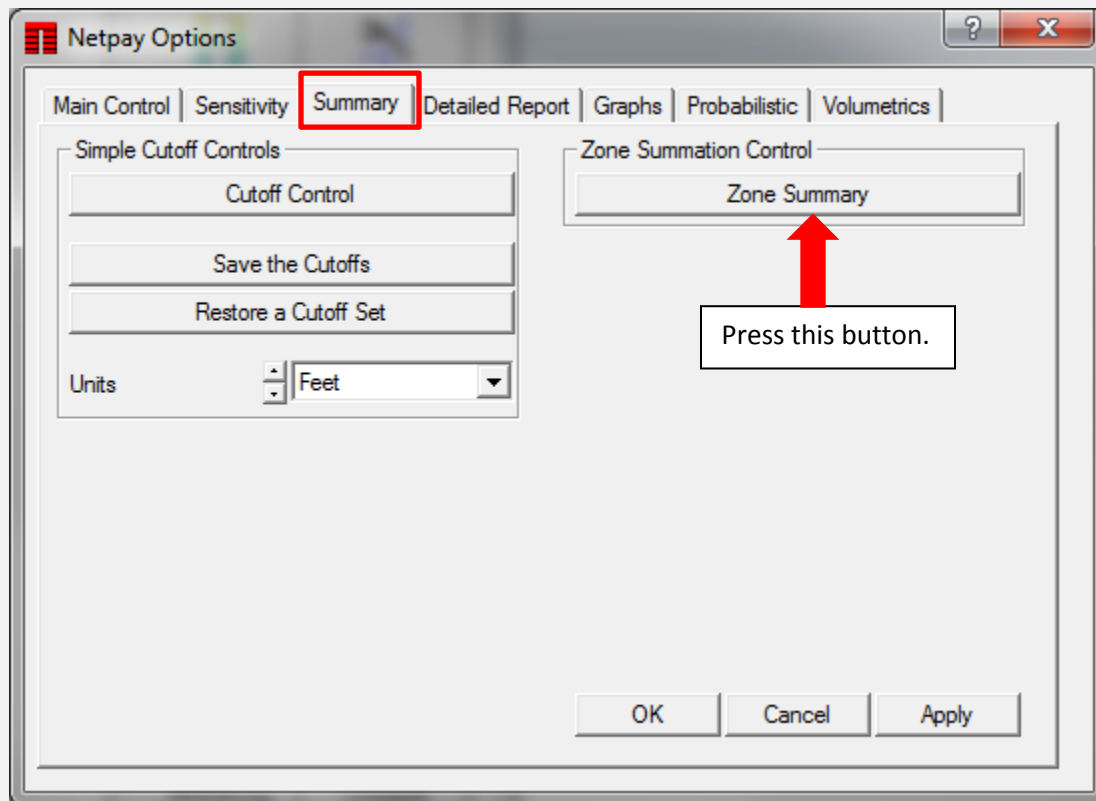
This is activated by using the following settings in the **Edit->Preferences -> Mapping** control panel.



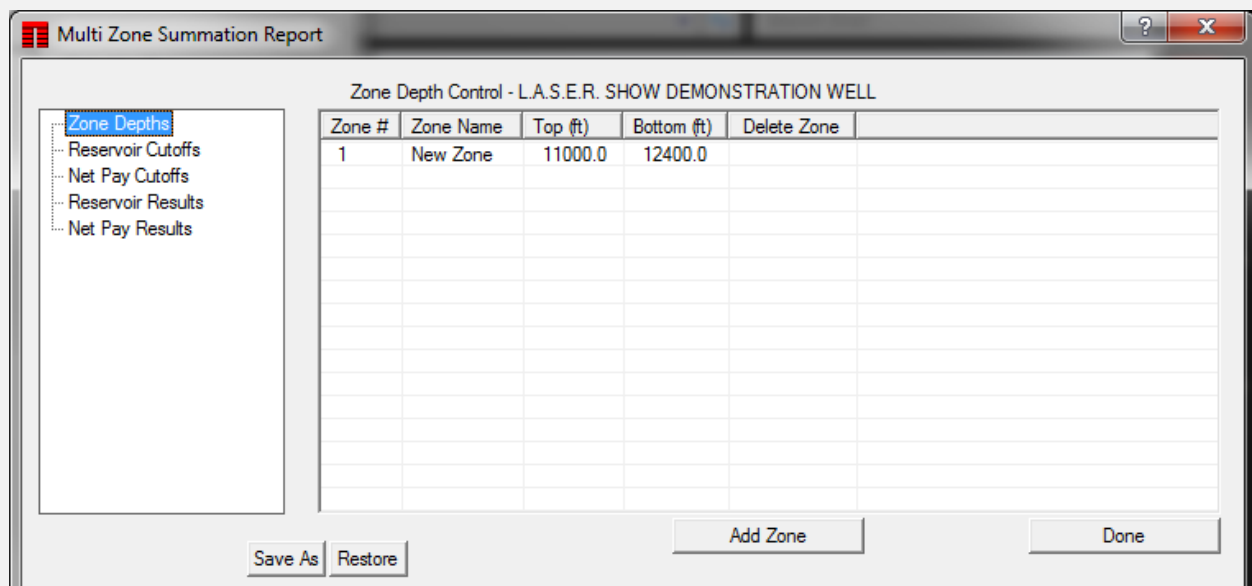
Restart TerraStation and these settings will be active on all maps.

Netpay Zone Summary Addition

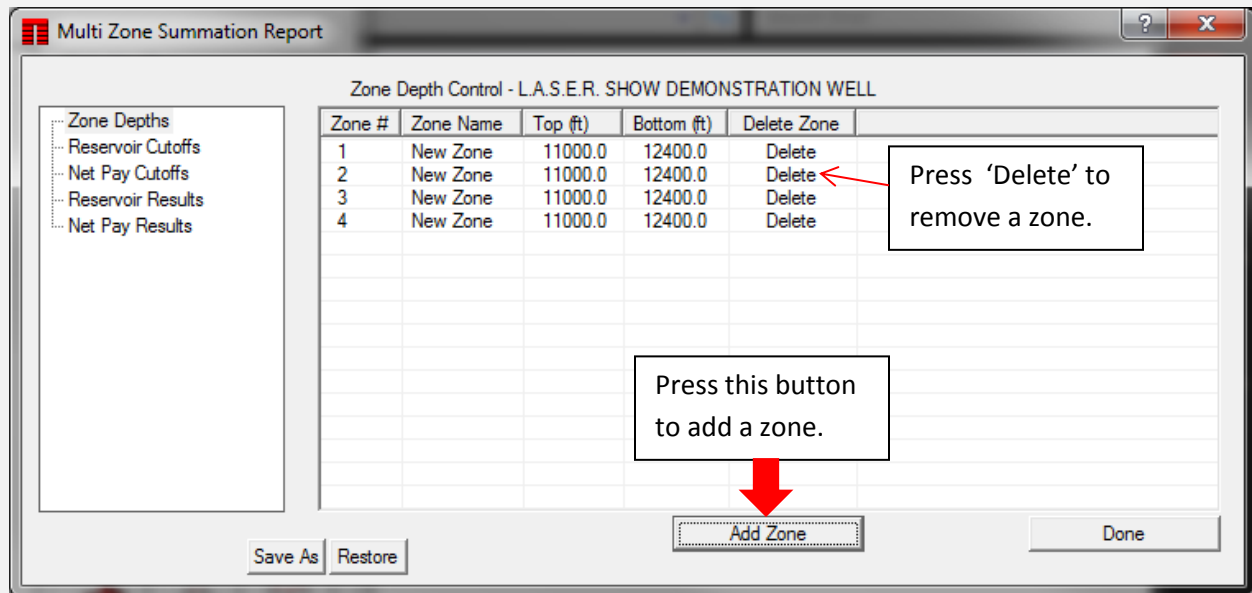
A new form of Zone Summary is now available. This is accessed via the **Netpay Analysis->Summary** control panel, as shown below. Don't forget to set up the curves to be used first (on the Main Control panel)



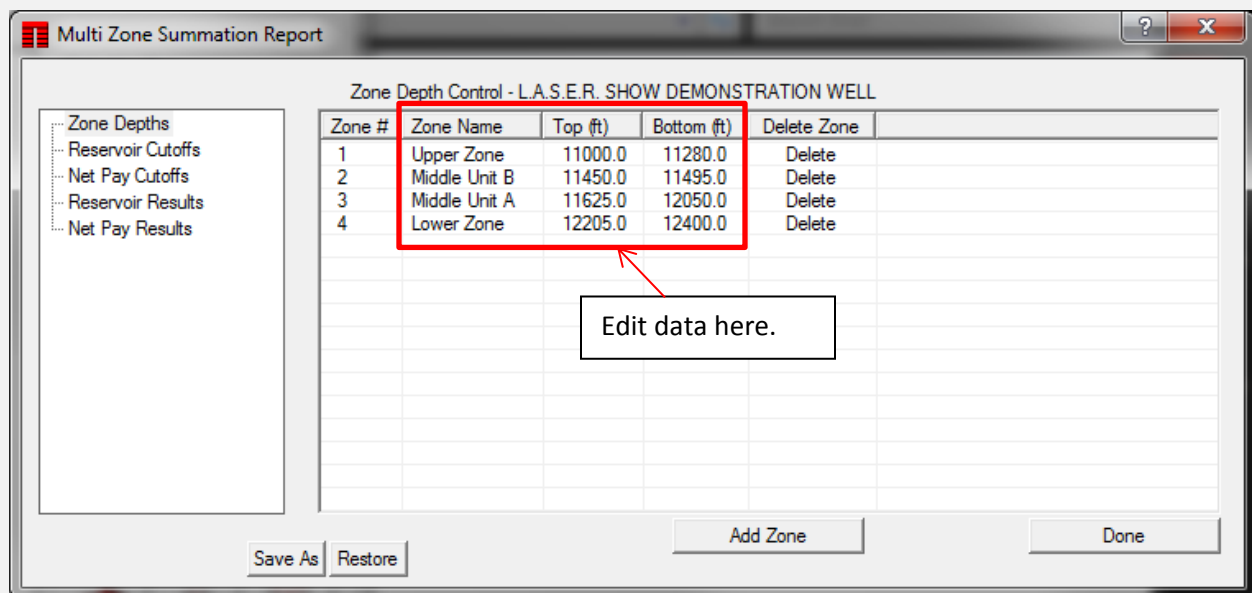
The initial display looks something like this:



Press the **Add Zone** button to add as many zones as you need. One press for each new zone. For example...



Then edit the Zone Names and top and bottom depths in the table...



You can then specify the cutoffs for each zone. Note that you can define different cutoff sets for the Netpay and the reservoir rock.

Click on the **Reservoir Cutoffs** option on the left hand side of the window.

Multi Zone Summation Report

Reservoir Cutoff Control - L.A.S.E.R. SHOW DEMONSTRATION WELL

Zone #	Min Thick (ft)	Vsh Cut	Sw Cut	Phi Cut
1	0.00	0.380	0.550	0.040
2	0.00	0.380	0.550	0.040
3	0.00	0.380	0.550	0.040
4	0.00	0.380	0.550	0.040

Buttons: Save As, Restore, Done

Edit them to your desired values.

Repeat this for the **Net Pay Cutoffs**.

Now click on the **Reservoir Results** item on the left of the window...

Multi Zone Summation Report

Reservoir Results - L.A.S.E.R. SHOW DEMONSTRATION WELL

Zone #	Gross	Res Rock	RR/Gross	Av Vsh	Av Sw	Av Phi	VshH	Phi-wt Sw	PhiH
1	280.50	214.00	0.7629	0.302	0.788	0.184	0.00	0.44	39.30
2	45.50	0.00	0.0000	0.000	0.000	0.000	0.00	0.00	0.00
3	425.50	64.50	0.1516	0.238	0.016	0.257	0.00	0.01	16.56
4	195.50	2.50	0.0128	0.369	0.524	0.205	0.00	0.42	0.51

Buttons: Save As, Restore, Print Report, Done

You will see the results of the cutoff calculations for the Reservoir cutoffs.

Click on the **Net Pay Results** item for the corresponding display based on the net pay cutoffs.

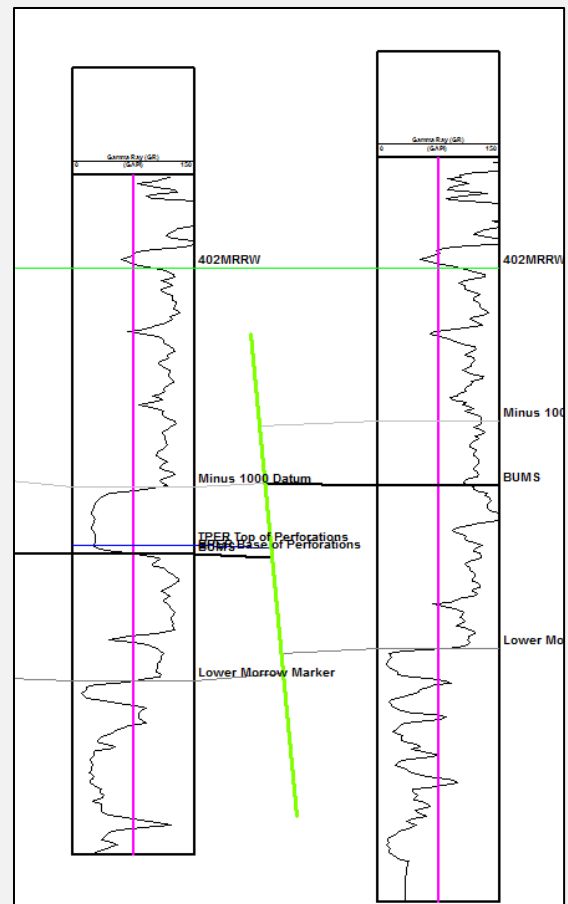
You can also generate a summary report by pressing the **Print Report** button.

Faults on Structural and Stratigraphic Sections

Any faults that are added to a structural section are now saved with that section and are specific to that section's type – structural or stratigraphic. This means you can now have your structural interpretation and your stratigraphic fault interpretation saved separately and they will not interfere with each other. This was not the case in the past.



STRUCTURAL SECTION



STRATIGRAPHIC SECTION

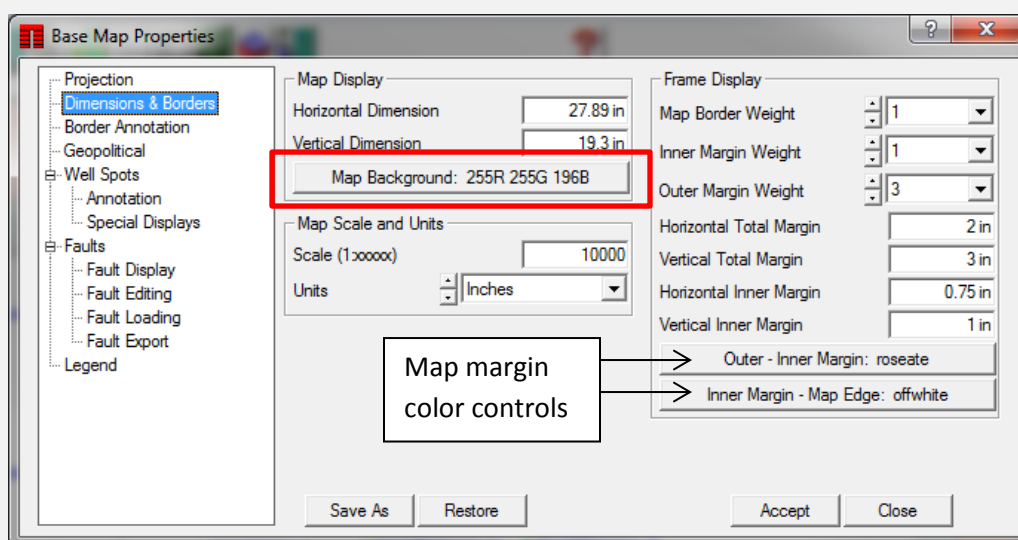
Note: The fault interpretations are stored separately. You must still edit them on the appropriate section display. That is, changes made on the structural version of the fault are not manifested on the stratigraphic version, and vice versa.

Map Annotation Improvements and Additions

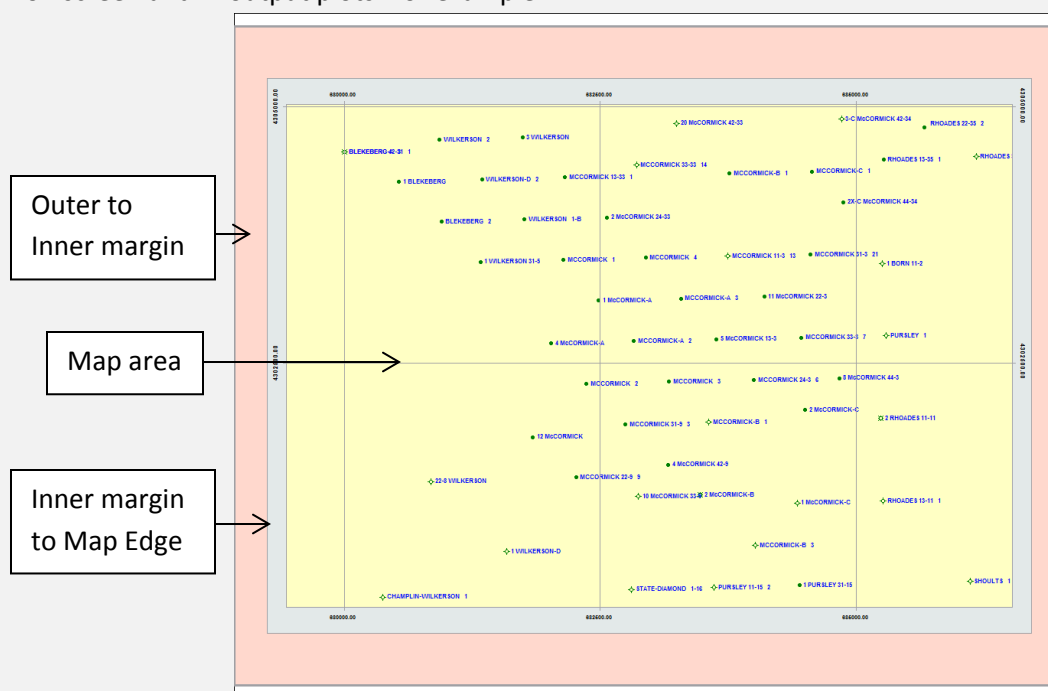
Several improvements to annotating the maps in TerraStation have been added.

i) Background color of the map area

You can now set the background color of the map area. This is done via the **Basemap-> Dimensions & Borders** control panel.

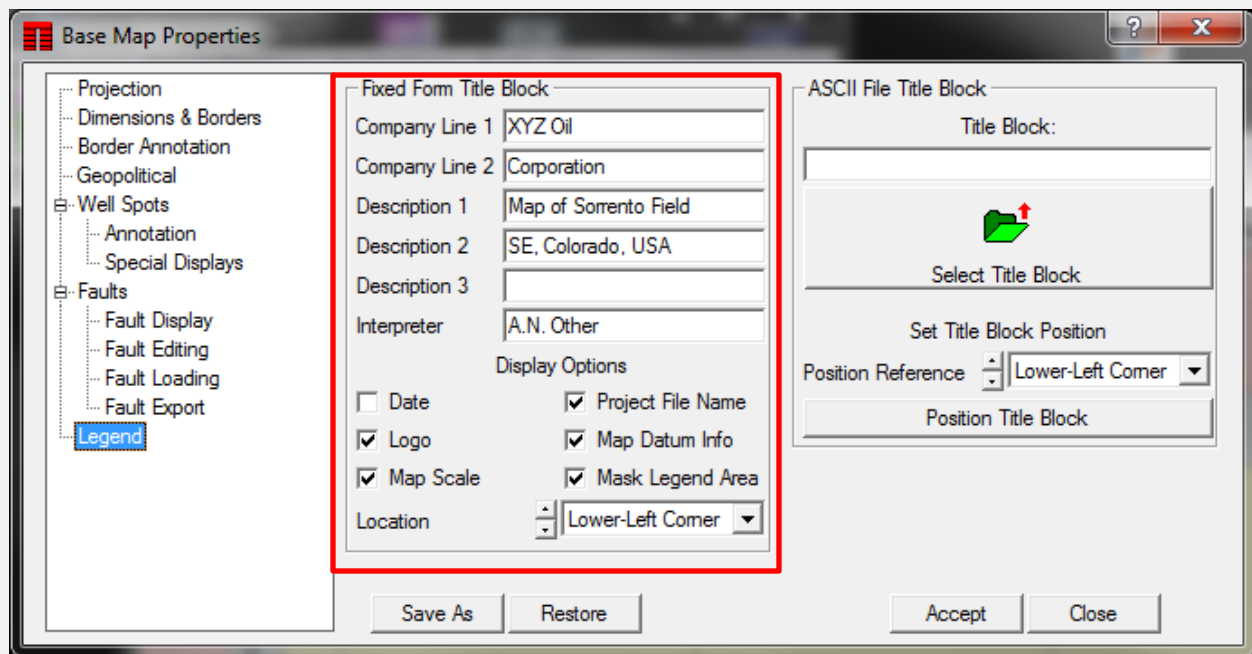


The **Map Background** button is highlighted in the above screen shot. Combined with the **Outer** and **Inner Margin** color control buttons – also on this panel – you have control over how your map appears on screen and in output plots. For example...



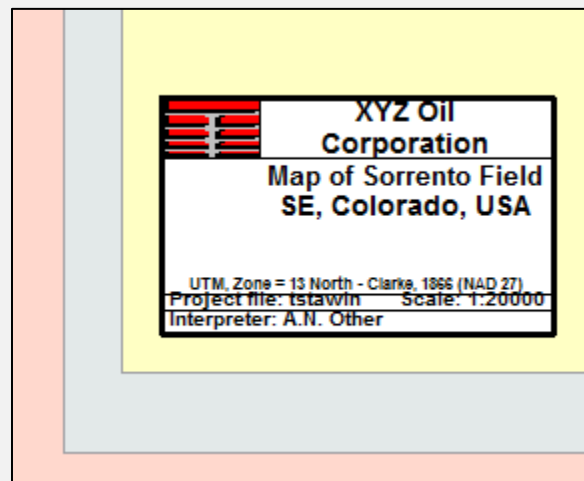
ii) Use of a Predefined Title Block

This is similar to the one found in cross section annotation. This is located on the **Base Map->Legend** panel. The inputs to the title block are controlled by the items on the left hand side of the panel.



The title block can be positioned at one of the four corners of the map area using the **Location** toggle.

For example...



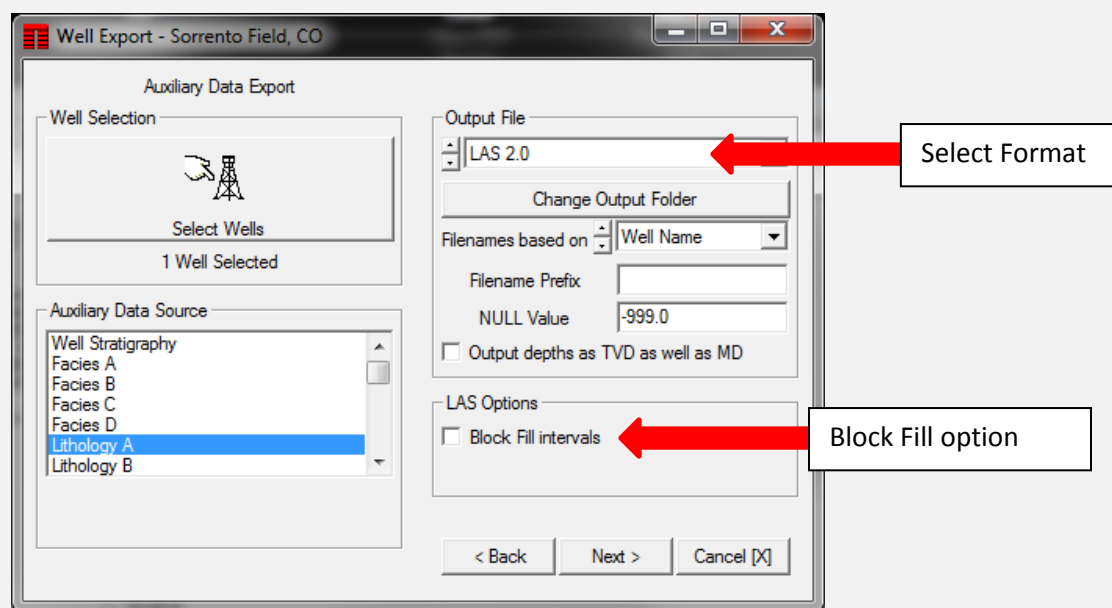
The ability to use an ASCII title block command file is still available on the right hand side of the panel. You can utilize both to have two legend boxes if you wish.

Export Auxiliary Data as LAS 2.0 format

We have added the option of LAS format for the export of the many of the well auxiliary data files. For example lithology, Facies, Picks, and so on.

Access to this is via the **Input/Output -> Well Export -> Auxiliary Well Data** option of the main TerraStation menu bar.

Once the main control window appears, you can specify the format desired by setting the toggle at the top of the Output File section to LAS 2.0. There is also the option to 'Block Fill' the intervals. This allows the LAS file to be output with a line of data for every depth, as opposed to a single line per interval, if desired.



TERRASCIENCES Locations and Agents

US OFFICE

TERRASCIENCES Inc.
26 West Dry Creek Circle,
Suite 360, Littleton
CO 80120
USA

Tel: (303) 794 5511
Intl: +1 (303) 794 5511

Sales Email:
sales@terrasciences.com

Support Email:
support@terrasciences.com

UK OFFICE

TERRASCIENCES Ltd.
Palace Chambers
41 London Road
Stroud, Glos., GL5 2AJ
United Kingdom

Tel: (07470) 987970
Intl: +44 (7470) 987970

Sales Email:
sales@terrasciences.co.uk

Support Email:
support@terrasciences.co.uk

Mexico Agent

Oil & Gas Optimization SA
Prolongacion Paseo Usumacinta,
Plaza Los Cedros, local 34,
Nacajuca, Tabasco
CP 86220, Mexico

Tel: +52 (993) 3139419
Email: info@ogopt.com